

INVESCO EXCHANGE-TRADED FUND TRUST

SUPPLEMENT DATED SEPTEMBER 30, 2020 TO THE PROSPECTUS DATED AUGUST 28, 2020:

Invesco Aerospace & Defense ETF	Invesco S&P 100 Equal Weight ETF
Invesco BuyBack Achievers™ ETF	Invesco S&P 500® Equal Weight ETF
Invesco Dividend Achievers™ ETF	Invesco S&P 500® Equal Weight Communication Services ETF
Invesco Dow Jones Industrial Average Dividend ETF	Invesco S&P 500® Equal Weight Consumer Discretionary ETF
Invesco DWA Basic Materials Momentum ETF	Invesco S&P 500® Equal Weight Consumer Staples ETF
Invesco DWA Consumer Cyclical Momentum ETF	Invesco S&P 500® Equal Weight Energy ETF
Invesco DWA Consumer Staples Momentum ETF	Invesco S&P 500® Equal Weight Financials ETF
Invesco DWA Energy Momentum ETF	Invesco S&P 500® Equal Weight Health Care ETF
Invesco DWA Financial Momentum ETF	Invesco S&P 500® Equal Weight Industrials ETF
Invesco DWA Healthcare Momentum ETF	Invesco S&P 500® Equal Weight Materials ETF
Invesco DWA Industrials Momentum ETF	Invesco S&P 500® Equal Weight Real Estate ETF
Invesco DWA Momentum ETF	Invesco S&P 500® Equal Weight Technology ETF
Invesco DWA Technology Momentum ETF	Invesco S&P 500® Equal Weight Utilities ETF
Invesco DWA Utilities Momentum ETF	Invesco S&P 500 GARP ETF
Invesco Dynamic Biotechnology & Genome ETF	Invesco S&P 500® Pure Growth ETF
Invesco Dynamic Building & Construction ETF	Invesco S&P 500® Pure Value ETF
Invesco Dynamic Energy Exploration & Production ETF	Invesco S&P 500® Quality ETF
Invesco Dynamic Food & Beverage ETF	Invesco S&P 500® Top 50 ETF
Invesco Dynamic Large Cap Growth ETF	Invesco S&P 500 Value with Momentum ETF
Invesco Dynamic Large Cap Value ETF	Invesco S&P MidCap 400® Equal Weight ETF
Invesco Dynamic Leisure and Entertainment ETF	Invesco S&P MidCap 400® Pure Growth ETF
Invesco Dynamic Market ETF	Invesco S&P MidCap 400® Pure Value ETF
Invesco Dynamic Media ETF	Invesco S&P MidCap Momentum ETF
Invesco Dynamic Networking ETF	Invesco S&P MidCap Quality ETF
Invesco Dynamic Oil & Gas Services ETF	Invesco S&P MidCap Value with Momentum ETF
Invesco Dynamic Pharmaceuticals ETF	Invesco S&P SmallCap 600® Equal Weight ETF
Invesco Dynamic Semiconductors ETF	Invesco S&P SmallCap 600® Pure Growth ETF
Invesco Dynamic Software ETF	Invesco S&P SmallCap 600® Pure Value ETF
Invesco FTSE RAFI US 1000 ETF	Invesco S&P SmallCap Momentum ETF
Invesco FTSE RAFI US 1500 Small-Mid ETF	Invesco S&P SmallCap Value with Momentum ETF
Invesco Golden Dragon China ETF	Invesco S&P Spin-Off ETF
Invesco High Yield Equity Dividend Achievers™ ETF	Invesco Water Resources ETF
Invesco International Dividend Achievers™ ETF	Invesco WilderHill Clean Energy ETF
Invesco NASDAQ Internet ETF	Invesco Zacks Mid-Cap ETF
Invesco Raymond James SB-1 Equity ETF	Invesco Zacks Multi-Asset Income ETF

(each a "Fund" and collectively, the "Funds")

Effective November 1, 2020 the number of shares in a Creation Unit for each Fund will be decreased from 50,000 to 10,000. Therefore, effective November 1, 2020, all references to "50,000 Shares" with respect to the number of shares comprising a Creation Unit of a Fund are removed and replaced with "10,000 Shares."

Please Retain This Supplement for Future Reference.

P-PS-TRST 1-PRO SUP-1 093020



Invesco Exchange-Traded Fund Trust

PBW Invesco WilderHill Clean Energy ETF

NYSE Arca, Inc.

Beginning on January 1, 2021, as permitted by regulations adopted by the Securities and Exchange Commission, paper copies of the Fund's shareholder reports will no longer be sent by mail, unless you specifically request paper copies of the reports from your financial intermediary, such as a broker-dealer or bank. Instead, the reports will be made available on a website, and you will be notified by mail each time a report is posted and provided with a website link to access the report.

If you already elected to receive shareholder reports electronically, you will not be affected by this change and you need not take any action. If you hold accounts through a financial intermediary, you may contact your financial intermediary to enroll in electronic delivery. Please note that not all financial intermediaries may offer this service.

You may elect to receive all future reports in paper free of charge. If you hold accounts through a financial intermediary, you can follow the instructions included with this disclosure, if applicable, or contact your financial intermediary to request that you continue to receive paper copies of your shareholder reports. Please note that not all financial intermediaries may offer this service. Your election to receive reports in paper will apply to all funds held with your financial intermediary.

Table of Contents

Summary Information	1
Additional Information About the Fund's Strategies and Risks	3
Tax Structure of ETFs	9
Portfolio Holdings	9
Management of the Fund	9
How to Buy and Sell Shares	10
Frequent Purchases and Redemptions of Shares	11
Dividends, Other Distributions and Taxes	11
Distributor	12
Net Asset Value	12
Fund Service Providers	13
Financial Highlights	14
Index Provider	15
Disclaimers	15
Premium/Discount Information	15
Other Information	15

Summary Information

Investment Objective

The Invesco WilderHill Clean Energy ETF (the “Fund”) seeks to track the investment results (before fees and expenses) of the WilderHill Clean Energy Index (the “Underlying Index”).

Fund Fees and Expenses

This table describes the fees and expenses that you may pay if you buy, hold, and sell shares of the Fund (“Shares”). You may pay other fees, such as brokerage commissions and other fees to financial intermediaries, which are not reflected in the table or the example below.

Annual Fund Operating Expenses

(expenses that you pay each year as a percentage of the value of your investment)

Management Fees	0.50%
Other Expenses	0.20%
Total Annual Fund Operating Expenses	0.70%

Example. This example is intended to help you compare the cost of investing in the Fund with the cost of investing in other funds. The example assumes that you invest \$10,000 in the Fund for the time periods indicated and then sell all of your Shares at the end of those periods. The example also assumes that your investment has a 5% return each year and that the Fund’s operating expenses remain the same. This example does not include brokerage commissions that investors may pay to buy and sell Shares. Although your actual costs may be higher or lower, your costs, based on these assumptions, would be:

1 Year	3 Years	5 Years	10 Years
\$72	\$224	\$390	\$871

Portfolio Turnover. The Fund pays transaction costs, such as commissions, when it purchases and sells securities (or “turns over” its portfolio). A higher portfolio turnover rate will cause the Fund to incur additional transaction costs and may result in higher taxes when Shares are held in a taxable account. These costs, which are not reflected in Total Annual Fund Operating Expenses or in the example, may affect the Fund’s performance. During the most recent fiscal year, the Fund’s portfolio turnover rate was 40% of the average value of its portfolio.

Principal Investment Strategies

The Fund generally will invest at least 90% of its total assets in the securities that comprise the Underlying Index.

Strictly in accordance with its guidelines and mandated procedures, WilderShares (the “Index Provider”) compiles and maintains the Underlying Index, which is composed of stocks of publicly traded companies in the United States that are engaged in the business of the advancement of cleaner energy and conservation. Stocks are included in the Underlying Index based on the Index Provider’s evaluation that such companies will substantially benefit from a societal transition toward the use of cleaner energy and conservation.

As of June 30, 2020, the Underlying Index was comprised of 40 constituents with market capitalizations ranging from \$187.7 million to \$201.2 billion.

The Fund employs a “full replication” methodology in seeking to track the Underlying Index, meaning that the Fund generally invests in all of the securities comprising the Underlying Index in proportion to their weightings in the Underlying Index.

Concentration Policy. The Fund will concentrate its investments (i.e., invest 25% or more of the value of its total assets) in securities of issuers in any one industry or group of industries only to the extent that the Underlying Index reflects a concentration in that industry or group of industries. The

Fund will not otherwise concentrate its investments in securities of issuers in any one industry or group of industries. As of April 30, 2020, the Fund had significant exposure to the clean energy industry and the industrials and information technology sectors. The Fund’s portfolio holdings, and the extent to which it concentrates in any industry or group of industries, are likely to change over time.

Principal Risks of Investing in the Fund

The following summarizes the principal risks of the Fund. The Shares will change in value, and you could lose money by investing in the Fund. The Fund may not achieve its investment objective.

Authorized Participant Concentration Risk. Only authorized participants (“APs”) may engage in creation or redemption transactions directly with the Fund. The Fund has a limited number of institutions that may act as APs and such APs have no obligation to submit creation or redemption orders. Consequently, there is no assurance that APs will establish or maintain an active trading market for the Shares. This risk may be heightened to the extent that securities held by the Fund are traded outside a collateralized settlement system. In that case, APs may be required to post collateral on certain trades on an agency basis (i.e., on behalf of other market participants), which only a limited number of APs may be able to do. In addition, to the extent that APs exit the business or are unable to proceed with creation and/or redemption orders with respect to the Fund and no other AP is able to step forward to create or redeem Creation Units (as defined below), this may result in a significantly diminished trading market for Shares, and Shares may be more likely to trade at a premium or discount to the Fund’s net asset value (“NAV”) and to face trading halts and/or delisting. Investments in non-U.S. securities, which may have lower trading volumes, may increase this risk.

COVID-19 Risk. The current outbreak of the novel strain of coronavirus, COVID-19, has resulted in instances of market closures and dislocations, extreme volatility, liquidity constraints and increased trading costs. Efforts to contain the spread of COVID-19 have resulted in travel restrictions, closed international borders, disruptions of healthcare systems, business operations and supply chains, layoffs, lower consumer demand, defaults and other significant economic impacts, all of which have disrupted global economic activity across many industries and may exacerbate other pre-existing political, social and economic risks, locally or globally. The ongoing effects of COVID-19 are unpredictable and may result in significant and prolonged effects on the Fund’s performance.

Equity Risk. Equity risk is the risk that the value of equity securities, including common stocks, may fall due to both changes in general economic conditions that impact the market as a whole, as well as factors that directly relate to a specific company or its industry. Such general economic conditions include changes in interest rates, periods of market turbulence or instability, or general and prolonged periods of economic decline and cyclical change. It is possible that a drop in the stock market may depress the price of most or all of the common stocks that the Fund holds. In addition, equity risk includes the risk that investor sentiment toward one or more industries will become negative, resulting in those investors exiting their investments in those industries, which could cause a reduction in the value of companies in those industries more broadly. The value of a company’s common stock may fall solely because of factors, such as an increase in production costs, that negatively impact other companies in the same region, industry or sector of the market. A company’s common stock also may decline significantly in price over a short period of time due to factors specific to that company, including decisions made by its management or lower demand for the company’s products or services. For example, an adverse event, such as an

unfavorable earnings report or the failure to make anticipated dividend payments, may depress the value of common stock.

Index Risk. Unlike many investment companies, the Fund does not utilize an investing strategy that seeks returns in excess of its Underlying Index. Therefore, the Fund would not necessarily buy or sell a security unless that security is added or removed, respectively, from its Underlying Index, even if that security generally is underperforming. Additionally, the Fund rebalances its portfolio in accordance with its Underlying Index, and, therefore, any changes to the Underlying Index's rebalance schedule will result in corresponding changes to the Fund's rebalance schedule.

Industry Concentration Risk. In following its methodology, the Underlying Index will be concentrated to a significant degree in securities of issuers located in a single industry or industry group. As a result, the Fund will also concentrate its investments in such industries or industry groups to approximately the same extent. By concentrating its investments in an industry or industry group, the Fund faces more risks than if it were diversified broadly over numerous industries or industry groups. Such industry-based risks, any of which may adversely affect the companies in which the Fund invests, may include, but are not limited to, the following: general economic conditions or cyclical market patterns that could negatively affect supply and demand in a particular industry, competition for resources; adverse labor relations, political or world events, obsolescence of technologies, and increased competition or new product introductions that may affect the profitability or viability of companies in an industry. In addition, at times, such industry or industry group may be out of favor and underperform other industries or the market as a whole.

Clean Energy Industry Risk. The risks of investing in the clean energy industry include the risks of focusing investments in the water, energy and environmental sectors, and adverse developments in these sectors may significantly affect the value of the Shares. Securities of companies in the clean energy industry are subject to swift price and supply fluctuations caused by events relating to international politics, the success of project development and tax and other governmental regulatory policies. Weak demand for the companies' products or services or for clean energy products and services in general, may adversely affect the Fund's performance. Obsolescence of existing technology, short product cycles, falling prices and profits, the supply of, and demand for, oil and gas, the price of oil and gas, competition from new market entrants and general economic conditions can significantly affect the clean energy industry. The clean energy industry is an emerging growth industry, and therefore shares of such companies may be more volatile and, historically, have been more volatile than shares of companies operating in other, more established industries. In addition, certain methods used to value companies involved in the alternative power and power technology sectors, particularly those companies that have not yet traded profitably, have not been in widespread use for a significant period of time. As a result, the use of these valuation methods may serve to increase further the volatility of certain alternative power and power technology company share prices.

Industrials Sector Risk. Changes in government regulation, world events and economic conditions may adversely affect companies in the industrials sector. In addition, these companies are at risk for environmental and product liability damage claims. Also, commodity price volatility, changes in exchange rates, imposition of import controls, increased competition, depletion of resources, technological developments and labor relations could adversely affect the companies in this sector.

Information Technology Sector Risk. Factors such as the failure to obtain, or delays in obtaining, financing or regulatory approval, intense competition, product compatibility, consumer preferences, corporate capital expenditure, rapid obsolescence, competition from alternative technologies, and research and development of new products may significantly affect the market value of securities of issuers in the information technology sector.

Issuer-Specific Changes Risk. The value of an individual security or particular type of security may be more volatile than the market as a whole and may perform differently from the value of the market as a whole.

Market Risk. Securities in the Underlying Index are subject to market fluctuations. You should anticipate that the value of the Shares will decline, more or less, in correlation with any decline in value of the securities in the Underlying Index. Additionally, natural or environmental disasters, widespread disease or other public health issues, war, acts of terrorism or other events could result in increased premiums or discounts to the Fund's NAV.

Market Trading Risk. The Fund faces numerous market trading risks, including the potential lack of an active market for the Shares, losses from trading in secondary markets, and disruption in the creation/redemption process of the Fund. Any of these factors may lead to the Shares trading at a premium or discount to the Fund's NAV.

Non-Correlation Risk. The Fund's return may not match the return of the Underlying Index for a number of reasons. For example, the Fund incurs operating expenses not applicable to the Underlying Index, and incurs costs in buying and selling securities, especially when rebalancing the Fund's securities holdings to reflect changes in the composition of the Underlying Index. In addition, the performance of the Fund and the Underlying Index may vary due to asset valuation differences and differences between the Fund's portfolio and the Underlying Index resulting from legal restrictions, costs or liquidity constraints.

Operational Risk. The Fund is exposed to operational risks arising from a number of factors, including, but not limited to, human error, processing and communication errors, errors of the Fund's service providers, counterparties or other third-parties, failed or inadequate processes and technology or systems failures. The Fund and its investment adviser, Invesco Capital Management LLC (the "Adviser"), seek to reduce these operational risks through controls and procedures. However, these measures do not address every possible risk and may be inadequate to address these risks.

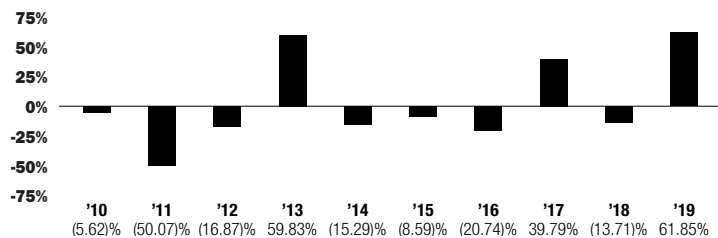
Small- and Mid-Capitalization Company Risk. Investing in securities of small- and mid-capitalization companies involves greater risk than customarily is associated with investing in larger, more established companies. These companies' securities may be more volatile and less liquid than those of more established companies. These securities may have returns that vary, sometimes significantly, from the overall securities market. Often small- and mid-capitalization companies and the industries in which they focus are still evolving and, as a result, they may be more sensitive to changing market conditions.

Performance

The bar chart below shows how the Fund has performed. The table below the bar chart shows the Fund's average annual total returns (before and after taxes). The bar chart and table provide an indication of the risks of investing in the Fund by showing how the Fund's total returns have varied from year to year and by showing how the Fund's average annual total returns compared with a broad measure of market performance and an additional index with characteristics relevant to the Fund. The Fund's performance reflects fee waivers, if any, absent which performance would have been lower. Although the information shown in the bar chart and the table gives you some idea of the risks involved in investing in the Fund, the Fund's past performance (before and after taxes) is not necessarily indicative of how the Fund will perform in the future.

Updated performance information is available online at www.invesco.com/ETFs.

Annual Total Returns—Calendar Years



Fund's year-to-date total return (ended as of June 30, 2020): 19.88%

Best Quarter (ended June 30, 2013): 25.58%

Worst Quarter (ended September 30, 2011): (38.74)%

Average Annual Total Returns for the Periods Ended December 31, 2019

After-tax returns in the table below are calculated using the historical highest individual federal marginal income tax rates and do not reflect the impact of state and local taxes. Actual after-tax returns depend on an investor's tax situation and may differ from those shown, and after-tax returns shown are not relevant to investors who hold Shares through tax-deferred arrangements, such as 401(k) plans or individual retirement accounts.

	1 Year	5 Years	10 Years
Return Before Taxes	61.85%	7.18%	(2.83)%
Return After Taxes on Distributions	60.89%	6.47%	(3.48)%
Return After Taxes on Distributions and Sale of Fund Shares	36.64%	5.27%	(2.35)%
WilderHill Clean Energy Index (reflects no deduction for fees, expenses or taxes)	59.32%	5.83%	(3.84)%
NASDAQ Composite Index (Price Only) (reflects no deduction for fees, expenses or taxes, and reflects no dividends paid by the component companies of the index)	35.23%	13.63%	14.74%

Management of the Fund

Investment Adviser. Invesco Capital Management LLC (the "Adviser").

Portfolio Managers

The following individuals are responsible jointly and primarily for the day-to-day management of the Fund's portfolio:

Name	Title with Adviser/Trust	Date Began Managing the Fund
Peter Hubbard	Director of Portfolio Management of the Adviser and Vice President of the Trust	June 2007
Pratik Doshi	Portfolio Manager of the Adviser	August 2020
Michael Jeanette	Senior Portfolio Manager of the Adviser	August 2008
Tony Seisser	Portfolio Manager of the Adviser	August 2014

Purchase and Sale of Shares

The Fund issues and redeems Shares at NAV only with APs and only in large blocks of 50,000 Shares (each block of Shares is called a "Creation Unit") or multiples thereof ("Creation Unit Aggregations"), generally in exchange for the deposit or delivery of a basket of securities. However, the Fund also reserves the right to permit or require Creation Units to be issued in exchange for cash. Except when aggregated in Creation Units, the Shares are not redeemable securities of the Fund.

Individual Shares may only be bought and sold in the secondary market (i.e., on a national securities exchange) through a broker or dealer at a market price. Because the Shares trade at market prices rather than NAV, Shares may trade at a price greater than NAV (at a premium), at NAV, or less than NAV (at a discount). An investor may incur costs attributable to the difference between the highest price a buyer is willing to pay to purchase

Shares (bid) and the lowest price a seller is willing to accept for Shares (ask) when buying or selling shares in the secondary market (the "bid-ask spread").

Recent information, including information on the Fund's NAV, market price, premiums and discounts, and bid-ask spreads, is available online at www.invesco.com/ETFs.

Tax Information

The Fund's distributions generally are taxed as ordinary income, capital gains or some combination of both, unless you are investing through a tax-advantaged arrangement, such as a 401(k) plan or an individual retirement account, in which case your distributions may be taxed as ordinary income when withdrawn from such account.

Payments to Broker-Dealers and Other Financial Intermediaries

If you purchase the Fund through a broker-dealer or other financial intermediary (such as a bank), the Fund's distributor or its related companies may pay the intermediary for certain Fund-related activities, including those that are designed to make the intermediary more knowledgeable about exchange traded products, such as the Fund, as well as for marketing, education or other initiatives related to the sale or promotion of Fund shares. These payments may create a conflict of interest by influencing the broker-dealer or other intermediary and your salesperson or financial adviser to recommend the Fund over another investment. Ask your salesperson or financial adviser or visit your financial intermediary's website for more information.

Additional Information About the Fund's Strategies and Risks

Principal Investment Strategies

The Fund generally will invest at least 90% of its total assets in components of its Underlying Index. The Fund operates as an index fund and is not actively managed. The Fund uses an "indexing" investment approach to seek to track the investment results, before fees and expenses, of its Underlying Index. The Adviser seeks correlation over time of 0.95 or better between the Fund's performance and the performance of its Underlying Index; a figure of 1.00 would represent perfect correlation. Another means of evaluating the relationship between the returns of the Fund and its Underlying Index is to assess the "tracking error" between the two. Tracking error means the variation between the Fund's annual return and the return of its Underlying Index, expressed in terms of standard deviation. The Fund seeks to have a tracking error of less than 5%, measured on a monthly basis over a one-year period by taking the standard deviation of the difference in the Fund's returns versus the Underlying Index's returns. Because the Fund uses an indexing approach to try to achieve its investment objective, the Fund does not take temporary defensive positions during periods of adverse market, economic or other conditions.

The Fund employs a full replication methodology in seeking to track its Underlying Index, meaning that it generally invests in all of the securities comprising its Underlying Index in proportion to the weightings of the securities in the Underlying Index. However, under various circumstances, it may not be possible or practicable to purchase all of those securities in those same weightings. In those circumstances, the Fund may purchase a sample of securities in its Underlying Index.

A "sampling" methodology means that the Adviser uses a quantitative analysis to select securities from the Underlying Index universe to obtain a representative sample of securities that have, in the aggregate, investment characteristics similar to the Underlying Index, in terms of key risk factors, performance attributes and other characteristics. These include industry weightings, market capitalization, return variability, earnings valuation, yield and other financial characteristics of securities. When employing a sampling

methodology, the Adviser bases the quantity of holdings in the Fund on a number of factors, including asset size of the Fund, and generally expects the Fund to hold less than the total number of securities in its Underlying Index. However, the Adviser reserves the right to invest the Fund in as many securities as it believes necessary to achieve the Fund's investment objective.

There also may be instances in which the Adviser may choose to (i) overweight or underweight a security in the Underlying Index, (ii) purchase securities not contained in the Underlying Index that the Adviser believes are appropriate to substitute for certain securities in the Underlying Index, or (iii) utilize various combinations of other available investment techniques in seeking to track the Underlying Index.

The Fund may sell securities included in its Underlying Index in anticipation of their removal from the Underlying Index, or purchase securities not included in the Underlying Index in anticipation of their addition to the Underlying Index.

Additional information about the construction of the Fund's Underlying Index is set forth below.

WilderHill Clean Energy Index (Invesco WilderHill Clean Energy ETF)

The WilderHill Clean Energy Index includes companies that have a significant exposure to clean energy, contribute to the advancement of clean energy, including those developing and selling energy technologies and energy management services designed to address efficiency and environmental challenges as well as changes in fossil fuel resource abundance. Trends affecting adoption of clean energy technologies include (but are not limited to) conventional air pollution, carbon dioxide and other greenhouse gas pollution leading to global warming, and risks to centralized grid or other energy infrastructure.

There is a strong bias in favor of pure play companies focused on technologies in (i) renewable energy, including solar, wind power and biofuels (ii) improving energy efficiency; (iii) advanced energy storage; (iv) cleaner fuels or biofuels; or (v) innovative power delivery, materials, energy conversion including fuel cells and related industries. Companies in emerging clean energy fields, such as hydroelectric, geothermal, wave, tidal, and others, will be considered with respect to carbon content, impact upon marine and terrestrial biodiversity, and the degree to which they advance or reflect the clean energy sector.

Strictly in accordance with its guidelines and mandated procedures, the Underlying Index includes companies focused on the following areas:

- **Renewable Energy Supplies-Harvesting.** These are the producers of energy that is renewably-made, or manufacturers relevant to green energy such as the makers of turbines and rotors used for wind power, makers of solar photovoltaic panels and suppliers of clean energy systems, and the makers of biofuels derived from renewable vegetable crops, as examples. These renewable methods supply desired electrical power directly where needed—or this “green” power could be stored as a clean fuel like hydrogen. Wind, solar, biofuels, hydro and waste-to-energy notably carry less burden of pollution, and renewable sources allow distributed generation that makes power closer to need.
- **Energy Storage.** This wide-ranging category includes advanced batteries and materials that hold energy in familiar and novel ways, flywheels that make use of momentum and spinning at high speeds to store energy, supercapacitors that build and then release large amounts of power very quickly, and storage by compression, hydrides or other means. Because most renewable power is not “firm” meaning not always on—like solar power that works only by day, or wind power just at windy times—joining renewable power with energy storage systems often makes sense.
- **Cleaner Fuels.** Includes various liquid, solid and other biofuels derived from renewable sources or crops; for instance cellulosic, sugar, algae, or other feedstock in ethanol, biobutanol or biogasoline, as well as

biomass and waste to energy. In the future, hydrogen—a gas that is the lightest and most abundant element—may become an ‘energy carrier’ by moving power made in one place to where it is needed. However, there are numerous daunting technical challenges including the lack of a hydrogen infrastructure and very high cost; hydrogen fuel cells are in only early technical development, not widely commercialized, and are still far more costly than fossil fuels in practice.

- **Energy Conversion.** These are the devices that convert an assortment of power, or fuels, or other inputs such as unmodulated electricity, gasoline/diesel etc. into the more desired electrical, motive, lighting or other power/force wherever needed. This could include complex whole conversion systems producing useful work such as electrical vehicles and plug in hybrids, or more singularly separate items like LEDs, and the inverters, advanced motors and materials for conversion to an intended electrical, mechanical power. Energy conversion is critical but also generally depends on having cleaner fuel for inputs or on innovative technologies that convert existing fuels more cleanly, preventing pollution.
- **Greener Utilities.** Among utilities in the United States are several explicitly emphasizing cleaner methods of making electric power including wind, solar, biogas, geothermal, hydro and others that can prevent pollution, while also ensuring greater price stability for the consumer. Unlike conventional plants, the price of renewable energy—though still costly—is widely declining. Should pollution such as from coal or oil be seen as more significant, or traditional fuel supplies be constrained or interrupted and prices rise—the alternative, independent and renewable approaches to producing utility power to the grid can become increasingly relevant. Nuclear power generation is notably excluded from this Index for clean energy.
- **Power Delivery and Conservation.** Of importance in clean energy systems are the electronics and other items needed to improve efficiency and energy conservation in the first place, as well as capital equipment for production or manufacture of clean energy systems. Like energy conversion it can include devices that smooth power outputs, convert DC to AC and match power loads to output. This sector can include inverters and equipment for power conditioning, and in transport, power management for hybrid, hydrogen and fuel cell vehicles.

The Underlying Index uses a modified equal dollar weighting methodology. No single stock may exceed 4% of the total weight of the Underlying Index at the quarterly rebalancing. For a stock to be included in the selection universe, the Index Provider must identify a company as one that has a significant exposure to clean energy, or contributes to the advancement of clean energy or is important to the development of clean energy. The Underlying Index generally includes companies that (i) help prevent pollutants such as carbon dioxide, nitrous oxide, sulfur oxide or particulates and avoid carbon or contaminants that harm oceans, land, air or ecosystems structure, (ii) work to further renewable energy efforts and do so in ecologically and economically sensible ways and (iii) incorporate the precautionary principles into their pollution prevention and clean energy efforts. Similarly, companies in the Underlying Index generally will not have their majority interests in oil or coal, which are the highest-carbon fuels. Large companies with interests outside clean energy may be included if they are significant to this sector.

Market capitalization for the majority of the Underlying Index's stocks is \$200 million and above. To account for notable but smaller companies sometimes significant to the clean energy field, a minority of the Underlying Index's stocks may have market capitalizations between \$50 million and \$200 million. Components less than \$200 million are weighted at rebalance to one-half of a percent (0.50%). To be eligible for the Underlying Index, a stock must:

- (a) have a three-month average market capitalization of at least \$50 million;
- (b) have a three-month average closing price above \$1.00;
- (c) be listed on a major U.S. exchange; and
- (d) reach the minimum average daily liquidity requirements for sufficient trade volume.

The Underlying Index is rebalanced quarterly in March, June, September, and December. The Fund is rebalanced in accordance with the Underlying Index.

Principal Risks of Investing in the Fund

The following provides additional information regarding certain of the principal risks identified under “Principal Risks of Investing in the Fund” in the Fund’s “Summary Information” section. Any of the following risks may impact the Fund’s NAV, which could result in the Fund trading at a premium or discount to NAV.

Authorized Participant Concentration Risk. Only APs may engage in creation or redemption transactions directly with the Fund. The Fund has a limited number of institutions that may act as APs, and such APs have no obligation to submit creation or redemption orders. Consequently, there is no assurance that APs will establish or maintain an active trading market for the Shares. The risk may be heightened to the extent that securities held by the Fund are traded outside a collateralized settlement system. In that case, APs may be required to post collateral on certain trades on an agency basis (i.e., on behalf of other market participants), which only a limited number of APs may be able to do. In addition, to the extent that APs exit the business or are unable to proceed with creation and/or redemption orders with respect to the Fund and no other AP is able to step forward to create or redeem Creation Units, this may result in a significantly diminished trading market for Shares, and Shares may be more likely to trade at a premium or discount to NAV and to face trading halts and/or delisting. Investments in non-U.S. securities, which may have lower trading volumes, may increase this risk.

COVID-19 Risk. The current outbreak of the novel strain of coronavirus, COVID-19, has resulted in instances of market closures and dislocations, extreme volatility, liquidity constraints and increased trading costs. Efforts to contain the spread of COVID-19 have resulted in travel restrictions, closed international borders, disruptions of healthcare systems, business operations and supply chains, layoffs, lower consumer demand, defaults and other significant economic impacts, all of which have disrupted global economic activity across many industries and may exacerbate other pre-existing political, social and economic risks, locally or globally. The ongoing effects of COVID-19 are unpredictable and may result in significant and prolonged effects on the Fund’s performance.

Equity Risk. Equity risk is the risk that the value of equity securities, including common stocks, will fall. The value of an equity security may fall due to changes in general economic conditions that impact the market as a whole and that are relatively unrelated to an issuer or its industry. These conditions include changes in interest rates, specific periods of overall market turbulence or instability, or general and prolonged periods of economic decline and cyclical change. An issuer’s common stock in particular may be especially sensitive to, and more adversely affected by, these general movements in the stock market; it is possible that a drop in the stock market may depress the price of most or all of the common stocks that the Fund holds.

In addition, equity risk includes the risk that investor sentiment toward, and perceptions regarding, particular industries or economic sectors will become negative. Price changes of equity securities may occur in a particular region, industry, or sector of the market, and as a result, the value of an issuer’s common stock may fall solely because of factors, such as increases in production costs, that negatively impact other companies in the same industry or in a number of different industries.

Equity risk also includes the financial risks of a specific company, including that the value of the company’s securities may fall as a result of

factors directly relating to that company, such as decisions made by its management or lower demand for the company’s products or services. In particular, the common stock of a company may decline significantly in price over short periods of time. For example, an adverse event, such as an unfavorable earnings report, may depress the value of common stock; similarly, the common stock of an issuer may decline in price if the issuer fails to make anticipated dividend payments because, among other reasons, the issuer experiences a decline in its financial condition.

Index Risk. Unlike many investment companies that are “actively managed,” the Fund is a “passive” investor and therefore does not utilize an investing strategy that seeks returns in excess of the Underlying Index. Therefore, the Fund would not necessarily buy or sell a security unless that security is added or removed, respectively, from the Underlying Index, even if that security generally is underperforming. If a specific security is removed from the Underlying Index, the Fund may be forced to sell such security at an inopportune time or for a price lower than the security’s current market value. The Underlying Index may not contain the appropriate mix of securities for any particular economic cycle. Additionally, the Fund rebalances its portfolio in accordance with its Underlying Index, and, therefore, any changes to the Underlying Index’s rebalance schedule will result in corresponding changes to the Fund’s rebalance schedule. Further, unlike with an actively managed fund, the Adviser does not use techniques or defensive strategies designed to lessen the impact of periods of market volatility or market decline. This means that, based on certain market and economic conditions, the Fund’s performance could be lower than other types of funds with investment advisers that actively manage their portfolio assets to take advantage of market opportunities or defend against market events.

Industry Concentration Risk. In following its methodology, the Underlying Index will be concentrated to a significant degree in securities of issuers located in a single industry or industry group. As a result, the Fund will also concentrate its investments in such industries or industry groups to approximately the same extent. By concentrating its investments in an industry or industry group, the Fund faces more risks than if it were diversified broadly over numerous industries or industry groups. Such industry-based risks, any of which may adversely affect the companies in which the Fund invests, may include, but are not limited to, the following: general economic conditions or cyclical market patterns that could negatively affect supply and demand in a particular industry; competition for resources; adverse labor relations, political or world events; obsolescence of technologies; and increased competition or new product introductions that may affect the profitability or viability of companies in an industry. In addition, at times, such industry or industry group may be out of favor and underperform other industries or the market as a whole. Information about the Fund’s exposure to a particular industry, industry group or the market as a whole is available in the Fund’s Annual and Semi-Annual Reports to Shareholders, as well as on required forms filed with the SEC.

Clean Energy Industry Risk. The clean energy industry can be significantly affected by obsolescence of existing technology, short product cycles, falling prices and profits, competition from new market entrants and general economic conditions. Further, the clean energy industry can be significantly affected by intense competition and legislation resulting in more strict government regulations and enforcement policies and specific expenditures for cleanup efforts and can be subject to risks associated with hazardous materials. The clean energy industry can be significantly affected by fluctuations in energy prices and supply and demand of alternative energy fuels, energy conservation, the success of exploration projects and tax and other government regulations. The industry also can be significantly affected by the supply of and demand for specific products or services, the supply of and demand for oil and gas, the price of oil and gas, production spending, government regulation, world events and economic conditions.

Securities of the companies involved in this industry have been significantly more volatile than securities of companies operating in other, more established industries. Certain valuation methods currently used to value companies involved in the alternative power and power technology sectors, particularly those companies that have not yet traded profitably, have not been in widespread use for a significant period of time. As a result, the use of these valuation methods may serve to increase further the volatility of certain alternative power and power technology company share prices.

This industry sector is relatively nascent and under-researched in comparison to more established and mature sectors and should therefore be regarded as having greater investment risk. Changes in U.S., European and other governments' policies towards alternative power and power technology also may have an adverse effect on the Fund's performance.

The Fund may invest in the shares of companies with a limited operating history, some of which may have never traded profitably. Investing in young companies with a short operating history generally is riskier than investing in companies with a longer operating history.

The Fund, being composed of securities issued by companies operating in a limited number of industries, will carry greater risk and may be more volatile than a portfolio composed of securities issued by companies operating in a wide variety of different industries.

The price of crude oil, natural gas, electricity produced from traditional hydro power and that generated from nuclear power and possibly other as yet undiscovered energy sources could potentially have a negative impact on the competitiveness of renewable energies.

Industrials Sector Risk. Changes in government regulation, world events and economic conditions may adversely affect the companies in the industrials sector. In addition, these companies are at risk for environmental damage claims. Industrial companies also may be adversely affected by commodity price volatility, changes in exchange rates, imposition of import controls, increased competition, depletion of resources, technological developments, labor relations and changes in the supply of and demand for their specific products or services or for industrials sector products in general.

Information Technology Sector Risk. Companies in the technology sector may be adversely affected by the failure to obtain, or delays in obtaining, financing or regulatory approval, intense competition, both domestically and internationally, product compatibility, consumer preferences, corporate capital expenditure, rapid obsolescence and competition for the services of qualified personnel. Companies in the technology sector also face competition or potential competition with numerous alternative technologies. In addition, the highly competitive technology sector may cause the prices for these products and services to decline in the future.

Technology companies may have limited product lines, markets, financial resources or personnel. Companies in the information technology sector are heavily dependent on patent and intellectual property rights. The loss or impairment of these rights may adversely affect the profitability of these companies.

The technology sector is subject to rapid and significant changes in technology that are evidenced by the increasing pace of technological upgrades, evolving industry standards, ongoing improvements in the capacity and quality of digital technology, shorter development cycles for new products and enhancements, developments in emerging wireless transmission technologies and changes in customer requirements and preferences. The success of sector participants depends substantially on the timely and successful introduction of new products.

Issuer-Specific Changes Risk. The performance of the Fund depends on the performance of individual securities to which the Fund has exposure. The value of an individual security or particular type of security may be more volatile than the market as a whole and may perform worse than the market

as a whole, causing the value of its securities to decline. Poor performance may be caused by poor management decisions, competitive pressures, changes in technology, expiration of patent protection, disruptions in supply, labor problems or shortages, corporate restructurings, fraudulent disclosures or other factors. Issuers may, in times of distress or at their own discretion, decide to reduce or eliminate dividends, which may also cause their stock prices to decline.

Market Risk. Securities in the Underlying Index are subject to market fluctuations, and the Fund could lose money due to short-term market movements and over longer periods during market downturns. You should anticipate that the value of the Shares will decline, more or less, in correlation with any decline in value of the securities in the Underlying Index. The value of a security may decline due to general market conditions, economic trends or events that are not specifically related to the issuer of the security or due to factors that affect a particular industry or group of industries. During a general downturn in the securities markets, multiple asset classes may be negatively affected. Additionally, natural or environmental disasters, widespread disease or other public health issues, war, acts of terrorism or other events could result in increased premiums or discounts to the Fund's NAV.

Market Trading Risk. The Fund faces numerous market trading risks, including losses from trading in secondary markets, periods of high volatility and disruption in the creation/redemption process of the Fund. Although Shares are listed for trading on a securities exchange, there can be no assurance that an active trading market for Shares will develop or be maintained by market makers or APs, that Shares will continue to trade on any such exchange or that Shares will continue to meet the requirements for listing on an exchange. Any of these factors, among others, may lead to the Shares trading at a premium or discount to the Fund's NAV. As a result, an investor could lose money over short or long periods. Further, the Fund may experience low trading volume and wide bid/ask spreads. Bid/ask spreads vary over time based on trading volume and market liquidity (including for the underlying securities held by the Fund), and are generally lower if Shares have more trading volume and market liquidity and higher if Shares have little trading volume and market liquidity. Additionally, in stressed market conditions, the market for Shares may become less liquid in response to deteriorating liquidity in the markets for the Fund's portfolio holdings, which may cause a variance in the market price of Shares and their underlying value.

Non-Correlation Risk. The Fund's returns may not match the returns of the Underlying Index (that is, it may experience tracking error) for a number of reasons. For example, the Fund incurs operating expenses not applicable to the Underlying Index and incurs costs in buying and selling securities, especially when rebalancing the Fund's securities holdings to reflect changes in the composition of the Underlying Index. To the extent that the Fund has recently commenced operations and/or otherwise has a relatively small amount of assets, such transaction costs could have a proportionally greater impact on the Fund. Additionally, if the Fund uses a sampling approach, it may result in returns for the Fund that are not as well-correlated with the return of the Underlying Index as would be the case if the Fund purchased all of the securities in the Underlying Index in the proportions represented in the Underlying Index.

The performance of the Fund and the Underlying Index may vary due to asset valuation differences and differences between the Fund's portfolio and the Underlying Index resulting from legal restrictions, costs or liquidity constraints. Additionally, if the Fund issues or redeems Creation Units principally for cash, it will incur higher costs in buying or selling securities than if it issued and redeemed Creation Units principally in-kind, which may contribute to tracking error. The Fund may fair value certain of the securities it holds. To the extent the Fund calculates its NAV based on fair value prices, the Fund's ability to track the Underlying Index may be adversely affected. Since the Underlying Index is not subject to the tax diversification requirements to which the Fund must adhere, the Fund may be required to deviate its investments from the securities contained in, and relative

weightings of, the Underlying Index. The Fund may not invest in certain securities included in the Underlying Index due to liquidity constraints. Liquidity constraints also may delay the Fund's purchase or sale of securities included in the Underlying Index. For tax efficiency purposes, the Fund may sell certain securities to realize losses, causing it to deviate from the Underlying Index.

The Fund generally attempts to remain fully invested in the constituents of the Underlying Index. However, the Adviser may not fully invest the Fund's assets at times, either as a result of cash flows into the Fund, to retain a reserve of cash to meet redemptions and expenses, or because of low assets.

The investment activities of one or more of the Adviser's affiliates, including other subsidiaries of the Adviser's parent company, Invesco Ltd., for their proprietary accounts and for client accounts also may adversely impact the Fund's ability to track the Underlying Index. For example, in regulated industries, certain emerging or international markets and under corporate and regulatory ownership definitions, there may be limits on the aggregate amount of investment by affiliated investors that may not be exceeded, or that may not be exceeded without the grant of a license or other regulatory or corporate consent, or, if exceeded, may cause the Adviser, the Fund or other client accounts to suffer disadvantages or business restrictions. As a result, the Fund may be restricted in its ability to acquire particular securities due to positions held by the Fund and the Adviser's affiliates.

Operational Risk. The Fund is exposed to operational risks arising from a number of factors, including, but not limited to, human error, processing and communication errors, errors of the Fund's service providers, counterparties or other third-parties, failed or inadequate processes and technology or systems failures. The Fund and the Adviser seek to reduce these operational risks through controls and procedures. However, these measures do not address every possible risk and may be inadequate to address these risks.

Small- and Mid-Capitalization Company Risk. Securities of small- and mid-capitalization companies may be more volatile and thinly traded (that is, less liquid) than those of more established companies. These securities may have returns that vary, sometimes significantly, from the overall securities market. Often small- and mid-capitalization companies and the industries in which they focus are still evolving and, as a result, they may be more sensitive to changing market conditions. In addition, small- and mid-capitalization companies are typically less financially stable than larger, more established companies, and they may depend on a small number of essential personnel, making them more vulnerable to loss of personnel. Smaller capitalization companies also normally have less diverse product lines than large-capitalization companies and are more susceptible to adverse developments concerning their products. As such, small- and mid-capitalization companies typically are more likely to be adversely affected than large-capitalization companies by changes in earnings results, business prospects, investor expectations or poor economic or market conditions.

Non-Principal Investment Strategies

The Fund, after investing at least 90% of its total assets in securities that comprise its Underlying Index, may invest its remaining assets in securities (including other funds) not included in its Underlying Index, and in money market instruments, including repurchase agreements and other funds, including affiliated funds, that invest exclusively in money market instruments (subject to applicable limitations under the 1940 Act or exemptions therefrom), convertible securities, structured notes (notes on which the amount of principal repayment and interest payments is based on the movement of one or more specified factors, such as the movement of a particular security or securities index) and in futures contracts, options and options on futures contracts. The Fund may use options, futures contracts, convertible securities and structured notes to seek performance that corresponds to its Underlying Index, and to manage cash flows.

The Adviser anticipates that it may take approximately two business days (a business day is any day that the New York Stock Exchange ("NYSE") is open) for additions to and deletions from the Underlying Index to fully settle in the portfolio composition of the Fund.

In accordance with 1940 Act rules, the Fund has adopted a policy to invest, under normal circumstances, at least 80% of the value of its total assets in the particular types of securities, and/or in securities of companies in the particular industries or economic sectors, that are suggested by the Fund's name (the "80% investment policy"). The Fund considers the securities suggested by its name to be those securities that comprise its Underlying Index. Therefore, the Fund anticipates meeting its 80% investment policy because it already generally invests at least 90% of its total assets in securities that comprise its Underlying Index, in accordance with its principal investment strategies.

The Fund's investment objective and the 80% investment policy are non-fundamental policies that the Board of Trustees (the "Board") of the Invesco Exchange-Traded Fund Trust (the "Trust") may change without shareholder approval upon 60 days' prior written notice to shareholders. The fundamental and non-fundamental policies of the Fund are set forth in the Fund's Statement of Additional Information ("SAI") under the section "Investment Restrictions."

Borrowing Money

The Fund may borrow money up to the limits set forth in the Fund's SAI under the section "Investment Restrictions."

Securities Lending

The Fund may lend its portfolio securities to brokers, dealers, and other financial institutions. In connection with such loans, the Fund receives liquid collateral equal to at least 102% (105% for international securities) of the value of the loaned portfolio securities. This collateral is marked-to-market on a daily basis.

Additional Risks of Investing in the Fund

The following provides additional risk information regarding investing in the Fund.

Convertible Securities Risk. A convertible security generally is a preferred stock that may be converted within a specified period of time into common stock. Convertible securities nevertheless remain subject to the risks of both debt securities and equity securities. As with other equity securities, the value of a convertible security tends to increase as the price of the underlying stock goes up, and to decrease as the price of the underlying stock goes down. Declining common stock values therefore also may cause the value of the Fund's investments to decline. Like a debt security, a convertible security provides a fixed income stream and also tends to decrease in value when interest rates rise. Moreover, many convertible securities have credit ratings that are below investment grade and are subject to the same risks as lower-rated debt securities.

Cybersecurity Risk. The Fund, like all companies, may be susceptible to operational and information security risks. Cybersecurity failures or breaches of the Fund or its service providers or the issuers of securities in which the Fund invests, have the ability to cause disruptions and impact business operations, potentially resulting in financial losses, the inability of Fund shareholders to transact business, violations of applicable privacy and other laws, regulatory fines, penalties, reputational damage, reimbursement or other compensation costs, and/or additional compliance costs. The Fund and its shareholders could be negatively impacted as a result.

Derivatives Risk. The Fund may invest in derivatives, such as futures and options. Derivatives are financial instruments that derive their value from an underlying asset, such as a security, index or exchange rate. Derivatives may be riskier than other types of investments and may be more volatile and less liquid than other securities.

Derivatives may be used to create synthetic exposure to an underlying asset or to hedge a portfolio risk. If the Fund uses derivatives to "hedge" a portfolio risk, the change in value of a derivative may not correlate as

expected with the underlying asset being hedged, and it is possible that the hedge therefore may not succeed. In addition, given their complexity, derivatives may be difficult to value.

Derivatives are subject to a number of risks including credit risk, interest rate risk, and market risk. Credit risk refers to the possibility that a counterparty will be unable and/or unwilling to perform under the agreement. Interest rate risk refers to fluctuations in the value of an asset resulting from changes in the general level of interest rates.

Over-the-counter derivatives are also subject to counterparty risk (sometimes referred to as "default risk"), which is the risk that the other party to the contract will not fulfill its contractual obligations.

Derivatives may be especially sensitive to changes in economic and market conditions, and their use may give rise to a form of leverage. Leverage may cause the portfolio of the Fund to be more volatile than if the portfolio had not been leveraged because leverage can exaggerate the effect of any increase or decrease in the value of securities held by the Fund. For some derivatives, such leverage could result in losses that exceed the original amount invested in the derivative.

Index Provider Risk. The Fund seeks to track the investment results, before fees and expenses, of its Underlying Index, as published by the Index Provider. There is no assurance that the Index Provider will compile the Underlying Index accurately, or that the Underlying Index will be determined, composed or calculated accurately. While the Index Provider gives descriptions of what the Underlying Index is designed to achieve, the Index Provider generally does not provide any warranty or accept any liability in relation to the quality, accuracy or completeness of data in the Underlying Index, and it generally does not guarantee that its Underlying Index will be in line with its methodology. Errors made by the Index Provider with respect to the quality, accuracy and completeness of the data within its Underlying Index may occur from time to time and may not be identified and corrected by the Index Provider for a period of time, if at all. Therefore, gains, losses or costs associated with Index Provider errors will generally be borne by the Fund and its shareholders.

Index Rebalancing Risk. Pursuant to the methodology that the Index Provider uses to calculate and maintain the Underlying Index, a security may be removed from the Fund's Underlying Index in the event that it does not comply with the eligibility requirements of the Underlying Index. As a result, the Fund may be forced to sell securities at inopportune times or for prices other than at current market values or may elect not to sell such securities on the day that they are removed from the Underlying Index, due to market conditions or otherwise. Due to these factors, the variation between the Fund's annual return and the return of its Underlying Index may increase significantly.

Apart from scheduled rebalances, the Index Provider may carry out additional ad hoc rebalances to its Underlying Index, for example, to correct an error in the selection of index constituents. When the Fund in turn rebalances its portfolio, any transaction costs and market exposure arising from such portfolio rebalancing will be borne by the Fund and its shareholders. Unscheduled rebalances also expose the Fund to additional tracking error risk. Therefore, errors and additional ad hoc rebalances carried out by the Index Provider may increase the Fund's costs and market exposure.

Money Market Funds Risk. Money market funds are subject to management fees and other expenses, and the Fund's investments in money market funds will cause it to bear proportionately the costs incurred by the money market funds' operations while simultaneously paying its own management fees and expenses. An investment in a money market fund is not insured or guaranteed by the Federal Deposit Insurance Corporation or any other government agency; it is possible to lose money by investing in a money market fund. To the extent that the Fund invests in money market funds, the Fund will be subject to the same risks that investors experience when investing in money market funds. These risks may include the impact of significant fluctuations in assets as a result of the cash sweep program or purchase and redemption activity in those funds.

Money market funds are open-end registered investment companies that historically have traded at a stable \$1.00 per share price. However, money market funds that do not meet the definition of a "retail money market fund" or "government money market fund" under the 1940 Act are required to transact at a floating NAV per share (i.e., in a manner similar to how all other non-money market mutual funds transact), instead of at a \$1.00 stable share price. Money market funds may also impose liquidity fees and redemption gates for use in times of market stress. If the Fund invested in a money market fund with a floating NAV, the impact on the trading and value of the money market instrument may negatively affect the Fund's return potential.

Natural Disaster/Epidemic Risk. Natural or environmental disasters, such as earthquakes, fires, floods, hurricanes, tsunamis and other severe weather-related phenomena generally, and widespread disease, including pandemics and epidemics, have been and may be highly disruptive to economies and markets, adversely impacting individual companies, sectors, industries, markets, currencies, interest and inflation rates, credit ratings, investor sentiment, and other factors affecting the value of the Fund's investments. Additionally, if a sector or sectors in which an index is concentrated is negatively impacted to a greater extent by such events, the Fund may experience heightened volatility. Given the increasing interdependence among global economies and markets, conditions in one country, market, or region are increasingly likely to adversely affect markets, issuers, and/or foreign exchange rates in other countries, including the U.S. Any such events could have a significant adverse impact on the value of the Fund's investments.

Repurchase Agreements Risk. Repurchase agreements are agreements pursuant to which the Fund acquires securities from a third party with the understanding that the seller will repurchase them at a fixed price on an agreed date. Repurchase agreements may be characterized as loans secured by the underlying securities. If the seller of securities under a repurchase agreement defaults on its obligation to repurchase the underlying securities, as a result of its bankruptcy or otherwise, the Fund will seek to dispose of such securities, which action could involve costs or delays. If the seller becomes insolvent and subject to liquidation or reorganization under applicable bankruptcy or other laws, the Fund's ability to dispose of the underlying securities may be restricted. If the seller fails to repurchase the securities, the Fund may suffer a loss to the extent proceeds from the sale of the underlying securities are less than the repurchase prices.

Risks of Futures and Options. The Fund may enter into U.S. futures contracts, options and options on futures contracts to simulate full investment in its Underlying Index, or to manage cash flows. The Fund will not use futures or options for speculative purposes. The Fund intends to use futures and options contracts to limit its risk exposure to levels comparable to direct investment in securities.

An option gives a holder the right to buy or sell a specific security or an index at a specified price within a specified period of time. An option on a futures contract gives the purchaser the right, in return for the premium paid, to assume a position in the underlying futures contract at a specified price at any time prior to the expiration date of the option. Options can offer large amounts of leverage, which may result in the Fund's NAV being more sensitive to changes in the value of the related instrument. The purchase of put or call options could be based upon predictions as to anticipated trends; such predictions could prove to be incorrect resulting in loss of part or all of the premium paid. The risk of trading uncovered call options in some strategies (e.g., selling uncovered stock index futures contracts) potentially is unlimited.

Futures contracts provide for the future sale by one party and purchase by another party of a specified amount of a specific instrument or index at a specified future time and at a specified price. Because futures contracts project price levels in the future, market circumstances may cause a discrepancy between the price of the stock index future and the movement in the Underlying Index. In the event of adverse price movements, the Fund

would remain required to make daily cash payments to maintain its required margin. There is no assurance that a liquid secondary market will exist for any particular futures contract at any particular time. The risk of loss in trading futures contracts potentially is unlimited.

The Fund must segregate liquid assets or take other appropriate measures to “cover” open positions in futures contracts. For futures contracts that do not cash settle, the Fund must segregate liquid assets equal to the full notional value of the futures contracts while the positions are open. For futures contracts that do cash settle, the Fund is permitted to set aside liquid assets in an amount equal to the Fund’s daily marked-to-market net obligations (i.e., the Fund’s daily net liability) under the futures contract, if any, rather than their full notional value.

Securities Lending Risk. Securities lending involves a risk of loss because the borrower may fail to return the securities in a timely manner or at all. If the Fund lends its securities and is unable to recover the securities loaned, it may sell the collateral and purchase a replacement security in the market. Lending securities entails a risk of loss to the Fund if and to the extent that the market value of the loaned securities increases and the collateral is not increased accordingly. Any cash received as collateral for loaned securities will be invested in an affiliated money market fund. This investment is subject to market appreciation or depreciation and the Fund will bear any loss on the investment of its cash collateral.

Shares May Trade at Prices Different than NAV. The NAV of the Shares generally will fluctuate with changes in the market value of the Fund’s holdings. The market prices of Shares generally will fluctuate in accordance with changes in NAV, as well as the relative supply of and demand for Shares on the exchange on which the Fund trades. The Adviser cannot predict whether the Fund’s Shares will trade below, at, or above the Fund’s NAV. Price differences may be due largely to the fact that supply and demand forces at work in the secondary trading market for the Shares will be related, but not identical, to the same forces influencing the prices of the securities in the Fund’s Underlying Index trading individually or in the aggregate at any point in time. In addition, disruptions to creations and redemptions or the existence of extreme market volatility may result in trading prices that differ significantly from NAV.

Structured Notes Risk. Investments in structured notes involve risks including interest rate risk, credit risk and market risk. Interest rate risk refers to fluctuations in the value of a note resulting from changes in the general level of interest rates. When the general level of interest rates goes up, the prices of notes tend to go down. Credit risk refers to the possibility that the issuer of a note will be unable and/or unwilling to make timely interest payments and/or repay the principal on its debt. Depending on the factors used, changes in interest rates and movement of such factors may cause significant price fluctuations. Structured notes may be less liquid than other types of securities and more volatile than the reference factor underlying the note. This means that the Fund may lose money if the issuer of the note defaults, as the Fund may not be able to readily close out its investment in such notes without incurring losses.

Trading Issues Risk. Investors buying or selling Shares in the secondary market may pay brokerage commissions or other charges, which may be a significant proportional cost for investors seeking to buy or sell relatively small amounts of Shares. Moreover, trading in Shares on the NYSE Arca, Inc. (the “Exchange”) may be halted due to market conditions or for reasons that, in the view of the Exchange, make trading in Shares inadvisable. In addition, trading in Shares on the Exchange is subject to trading halts caused by extraordinary market volatility pursuant to the Exchange’s “circuit breaker” rules. There can be no assurance that the requirements of the Exchange necessary to maintain the listing of the Fund will continue to be met or will remain unchanged. Foreign exchanges may be open on days when Shares are not priced, and therefore, the value of the securities in the Fund’s portfolio may change on days when shareholders will not be able to purchase or sell Shares.

Tax Structure of ETFs

Unlike interests in conventional mutual funds, which typically are bought and sold only at closing NAVs, Shares are traded throughout the day in the secondary market on a national securities exchange on an intra-day basis, and are created and redeemed principally in-kind in Creation Units at each day’s next calculated NAV. These in-kind arrangements are designed to protect shareholders from the adverse effects on the Fund’s portfolio that could arise from frequent cash creation and redemption transactions. In a conventional mutual fund, redemptions can have an adverse tax impact on taxable shareholders because the mutual fund may need to sell portfolio securities to obtain cash to meet such redemptions. These sales may generate taxable gains that must be distributed to the shareholders of the mutual fund, whereas the Shares’ in-kind redemption mechanism generally will not lead to such taxable events for the Fund or its shareholders.

The Fund may recognize gains as a result of rebalancing its securities holdings to reflect changes in the securities included in the Fund’s Underlying Index. The Fund also may be required to distribute any such gains to its shareholders to avoid adverse federal income tax consequences. For information concerning the tax consequences of distributions, see the section entitled “Dividends, Other Distributions and Taxes” in this Prospectus.

Portfolio Holdings

A description of the Trust’s policies and procedures with respect to the disclosure of the Fund’s portfolio holdings is available in the Fund’s SAI, which is available at www.invesco.com/ETFs.

Management of the Fund

Invesco Capital Management LLC is a registered investment adviser with its offices at 3500 Lacey Road, Suite 700, Downers Grove, IL 60515. Invesco Capital Management LLC serves as the investment adviser to the Invesco Actively Managed Exchange-Traded Commodity Fund Trust, Invesco Actively Managed Exchange-Traded Fund Trust, Invesco Exchange-Traded Fund Trust, Invesco Exchange-Traded Fund Trust II, Invesco Exchange-Traded Self-Indexed Fund Trust and Invesco India Exchange-Traded Fund Trust, a family of ETFs, with combined assets under management of \$107.5 billion as of June 30, 2020.

As the Fund’s investment adviser, the Adviser has overall responsibility for selecting and continuously monitoring the Fund’s investments, managing the Fund’s business affairs, and providing certain clerical, bookkeeping and other administrative services for the Trust.

Portfolio Managers

The Adviser uses a team of portfolio managers, investment strategists and other investment specialists in managing the Fund. This team approach brings together many disciplines and leverages the Adviser’s extensive resources.

Peter Hubbard, Vice President of the Trust, oversees all research, portfolio management and trading operations of the Fund. In this capacity, Mr. Hubbard oversees a team of portfolio managers (collectively with Mr. Hubbard, the “Portfolio Managers”) who are responsible for the day-to-day management of the Fund. In managing the Fund, Mr. Hubbard receives management assistance from Pratik Doshi, Michael Jeanette and Tony Seisser.

Each Portfolio Manager is responsible for various functions related to portfolio management, including investing cash flows, coordinating with other team members to focus on certain asset classes, implementing investment strategy and researching and reviewing investment strategy.

Each Portfolio Manager has limitations on his authority for risk management and compliance purposes that the Adviser believes to be appropriate.

- Peter Hubbard, Director of Portfolio Management of the Adviser, has been responsible for the management of the Fund since June 2007. He has been responsible for the management of certain funds in the Invesco family of ETFs since June 2007 and has been associated with the Adviser since 2005.
- Pratik Doshi, Portfolio Manager of the Adviser, has been responsible for the management of the Fund since August 2020. He has been responsible for the management of certain funds in the Invesco family of ETFs since October 2019 and has been associated with the Adviser since 2018. Prior to joining the Adviser, Mr. Doshi earned his MBA from the University of Chicago from 2016 to 2018. Prior to that, Mr. Doshi was a Vice President at Bank of America-Merrill Lynch from 2014 to 2016.
- Michael Jeanette, Senior Portfolio Manager of the Adviser, has been responsible for the management of the Fund since August 2008. He has been responsible for the management of certain funds in the Invesco family of ETFs since August 2008 and has been associated with the Adviser since 2008.
- Tony Seisser, Portfolio Manager of the Adviser, has been responsible for the management of the Fund since August 2014. He has been responsible for the management of certain funds in the Invesco family of ETFs since August 2014 and has been associated with the Adviser since 2013.

The Fund's SAI provides additional information about the Portfolio Managers' compensation structure, other accounts that the Portfolio Managers manage and the Portfolio Managers' ownership of Shares.

Advisory Fees

Pursuant to an investment advisory agreement between the Adviser and the Trust (the "Investment Advisory Agreement"), the Fund pays the Adviser for its services an annual fee equal to 0.50% of its average daily net assets (the "Advisory Fee").

The Fund is responsible for all of its own expenses, including, but not limited to, the investment advisory fees, costs of transfer agency, custody, fund administration, legal, audit and other services, interest, taxes, Acquired Fund Fees and Expenses, if any, brokerage commissions and other expenses connected with executions of portfolio transactions, sub-licensing fees related to its Underlying Index, any distribution fees or expenses, litigation expenses, fees payable to the Trust's Board members and officers who are not "interested persons" of the Trust or the Adviser, expenses incurred in connection with the Board members' services, including travel expenses and legal fees of counsel for those members of the Board who are not "interested persons" of the Trust or the Adviser and extraordinary expenses.

The Trust and the Adviser have entered into an Amended and Restated Excess Expense Agreement (the "Expense Agreement") on behalf of the Fund pursuant to which the Adviser has agreed to waive fees and/or pay Fund expenses to the extent necessary to prevent the operating expenses of the Fund (excluding interest expenses, sub-licensing fees, offering costs (as defined below), brokerage commissions and other trading expenses, taxes, Acquired Fund Fees and Expenses, if applicable, and extraordinary expenses) from exceeding 0.60% of its average daily net assets per year (the "Expense Cap"), at least until August 31, 2022.

The offering costs excluded from the Expense Cap for the Fund are: (a) initial legal fees pertaining to the Fund's Shares offered for sale; (b) initial SEC and state registration fees; and (c) initial fees paid to be listed on an exchange.

The Expense Agreement provides that the fees waived and/or expenses borne by the Adviser are subject to recapture by the Adviser for up to three years from the date the fees were waived or the expenses were incurred, but no recapture payment will be made by the Fund if it would result in the Fund exceeding (i) the Expense Cap or (ii) the expense cap in effect at the

time the fees and/or expenses subject to recapture were waived and/or borne by the Adviser.

The Fund may invest in money market funds that are managed by affiliates of the Adviser. The indirect portion of the management fee that the Fund incurs through such investments is in addition to the Adviser's management fee. Therefore, the Adviser has agreed to waive the management fees that it receives in an amount equal to the indirect management fees that the Fund incurs through its investments in affiliated money market funds through at least August 31, 2022.

There is no guarantee that the Adviser will extend the waiver of these fees past that date.

A discussion regarding the basis for the Board's approval of the Investment Advisory Agreement with respect to the Fund is available in the Fund's Annual Report to Shareholders for the fiscal year ended April 30, 2020.

How to Buy and Sell Shares

The Fund issues or redeems its Shares at NAV per Share only in Creation Units or Creation Unit Aggregations.

Most investors will buy and sell Shares in secondary market transactions through brokers. Shares of the Fund are listed for trading on the secondary market on the Exchange. Shares can be bought and sold throughout the trading day like other publicly traded shares. There is no minimum investment. Although Shares generally are purchased and sold in "round lots" of 100 Shares, brokerage firms typically permit investors to purchase or sell Shares in smaller "odd lots," at no per share price differential. When buying or selling Shares through a broker, you will incur customary brokerage commissions and charges, and you may pay some or all of the spread between the bid and the offered price in the secondary market on each leg of a round trip (purchase and sale) transaction.

The Shares trade on the Exchange under the symbol "PBW".

Share prices are reported in dollars and cents per Share.

APs may acquire Shares directly from the Fund, and APs may tender their Shares for redemption directly to the Fund, at NAV per Share, only in Creation Units or Creation Unit Aggregations, and in accordance with the procedures described in the SAI.

Under normal circumstances, the Fund will pay out redemption proceeds to a redeeming AP within two days after the AP's redemption request is received, in accordance with the process set forth in the Fund's SAI and in the agreement between the AP and the Fund's distributor. However, the Fund reserves the right, including under stressed market conditions, to take up to seven days after the receipt of a redemption request to pay an AP, all as permitted by the 1940 Act. If the Fund has foreign investments in a country where local market holiday(s) prevent the Fund from delivering such foreign investments to an AP in response to a redemption request, the Fund may take up to 15 days after the receipt of the redemption request to deliver such investments to the AP.

The Fund anticipates meeting redemption requests either by paying redemption proceeds to an AP primarily through in-kind redemptions or in cash. Cash used for redemptions will be raised from the sale of portfolio assets or may come from existing holdings of cash or cash equivalents. If the Fund holds Rule 144A securities, an AP that is not a "qualified institutional buyer," as such term is defined under Rule 144A of the Securities Act of 1933, as amended (the "Securities Act"), will not be able to receive those Rule 144A securities.

The Fund may liquidate and terminate at any time without shareholder approval.

Book Entry

Shares are held in book-entry form, which means that no stock certificates are issued. The Depository Trust Company ("DTC") or its nominee is the

record owner of all outstanding Shares of the Fund and is recognized as the owner of all Shares for all purposes.

Investors owning Shares are beneficial owners as shown on the records of DTC or its participants. DTC serves as the securities depository for all Shares. Participants in DTC include securities brokers and dealers, banks, trust companies, clearing corporations and other institutions that directly or indirectly maintain a custodial relationship with DTC. As a beneficial owner of Shares, you are not entitled to receive physical delivery of stock certificates or to have Shares registered in your name, and you are not considered a registered owner of Shares. Therefore, to exercise any right as an owner of Shares, you must rely upon the procedures of DTC and its participants. These procedures are the same as those that apply to any other stocks that you hold in book entry or “street name” form.

Share Trading Prices

The trading prices of Shares of the Fund on the Exchange may differ from the Fund’s daily NAV. Market forces of supply and demand, economic conditions and other factors may affect the trading prices of Shares of the Fund.

Frequent Purchases and Redemptions of Shares

Shares of the Fund may be purchased and redeemed directly from the Fund only in Creation Units by APs. The vast majority of trading in Shares of the Fund occurs on the secondary market and does not involve the Fund directly. In-kind purchases and redemptions of Creation Units by APs and cash trades on the secondary market are unlikely to cause many of the harmful effects of frequent purchases and/or redemptions of the Shares of the Fund. Cash purchases and/or redemptions of Creation Units, however, can result in increased tracking error, disruption of portfolio management, dilution to the Fund and increased transaction costs, which could negatively impact the Fund’s ability to achieve its investment objective, and may lead to the realization of capital gains. These consequences may increase as the frequency of cash purchases and redemptions of Creation Units by APs increases. However, direct trading by APs is critical to ensuring that Shares trade at or close to NAV.

To minimize these potential consequences of frequent purchases and redemptions of Shares, the Fund imposes transaction fees on purchases and redemptions of Creation Units to cover the custodial and other costs the Fund incurs in effecting trades. In addition, the Adviser monitors trades by APs for patterns of abusive trading and the Fund reserves the right not to accept orders from APs that the Adviser has determined may be disruptive to the management of the Fund, or otherwise are not in the best interests of the Fund. For these reasons, the Board has not adopted policies and procedures with respect to frequent purchases and redemptions of Shares of the Fund.

Dividends, Other Distributions and Taxes

Dividends and Other Distributions

Generally, dividends from net investment income, if any, are declared and paid quarterly by the Fund.

The Fund also intends to distribute its net realized capital gains, if any, to shareholders annually.

Dividends and other distributions may be declared and paid more frequently to comply with the distribution requirements of Subchapter M of the Internal Revenue Code and to avoid a federal excise tax imposed on regulated investment companies.

Distributions in cash may be reinvested automatically in additional whole Shares only if the broker through whom you purchased Shares makes such option available.

Taxes

The Fund intends to qualify each year as a regulated investment company (RIC) and, as such, is not subject to entity-level tax on the income and gain it distributes. If you are a taxable investor, dividends and distributions you receive generally are taxable to you whether you reinvest distributions in additional Fund shares or take them in cash. Every year, you will be sent information showing the amount of dividends and distributions you received during the prior calendar year. In addition, investors in taxable accounts should be aware of the following basic tax points as supplemented below where relevant:

Fund Tax Basics

- The Fund earns income generally in the form of dividends or interest on its investments. This income, less expenses incurred in the operation of the Fund, constitutes the Fund’s net investment income from which dividends may be paid to shareholders. If you are a taxable investor, distributions of net investment income generally are taxable to you as ordinary income.
- Distributions of net short-term capital gains are taxable to you as ordinary income. A higher portfolio turnover rate (a measure of how frequently assets within the Fund are bought and sold) is more likely to generate short-term capital gains than a lower portfolio turnover rate.
- Distributions of net long-term capital gains are taxable to you as long-term capital gains no matter how long you have owned your Fund Shares.
- A portion of income dividends paid by the Fund may be reported as qualified dividend income eligible for taxation by individual shareholders at long-term capital gain rates, provided certain holding period requirements are met. These reduced rates generally are available for dividends derived from the Fund’s investment in stocks of domestic corporations and qualified foreign corporations. Should the Fund invest primarily in debt securities, either none or only a nominal portion of the dividends paid by the Fund will be eligible for taxation at these reduced rates.
- The use of derivatives by the Fund may cause the Fund to realize higher amounts of ordinary income or short-term capital gain, distributions from which are taxable to individual shareholders at ordinary income tax rates rather than at the more favorable tax rates for long-term capital gain.
- Distributions declared to shareholders with a record date in December—if paid to you by the end of January—are taxable for federal income tax purposes as if received in December.
- Any long-term or short-term capital gains realized on the sale of your Fund Shares will be subject to federal income tax.
- A shareholder’s cost basis information will be provided on the sale of any of the shareholder’s Shares, subject to certain exceptions for exempt recipients. Please contact the broker (or other nominee) that holds your Shares with respect to reporting of cost basis and available elections for your account.
- At the time you purchase your Fund Shares, the Fund’s net asset value may reflect undistributed income or undistributed capital gains. A subsequent distribution to you of such amounts, although constituting a return of your investment, would be taxable. Buying Shares in the Fund just before it declares an income dividend or capital gains distribution is sometimes known as “buying a dividend.” In addition, the Fund’s net asset value may, at any time, reflect net unrealized appreciation, which may result in future taxable distributions to you.

- By law, if you do not provide the Fund with your proper taxpayer identification number and certain required certifications, you may be subject to backup withholding on any distributions of income, capital gains, or proceeds from the sale of your Shares. The Fund also must withhold if the IRS instructs it to do so. When withholding is required, the amount will be 24% of any distributions or proceeds paid.
- An additional 3.8% Medicare tax is imposed on certain net investment income (including ordinary dividends and capital gain distributions received from the Fund and net gains from taxable dispositions of Fund Shares) of U.S. individuals, estates and trusts to the extent that such person's "modified adjusted gross income" (in the case of an individual) or "adjusted gross income" (in the case of an estate or trust) exceeds a threshold amount. This Medicare tax, if applicable, is reported by you on, and paid with, your federal income tax return.
- You will not be required to include the portion of dividends paid by the Fund derived from interest on U.S. government obligations in your gross income for purposes of personal and, in some cases, corporate income taxes in many state and local tax jurisdictions. The percentage of dividends that constitutes dividends derived from interest on federal obligations will be determined annually. This percentage may differ from the actual percentage of interest received by the Fund on federal obligations for the particular days on which you hold shares.
- Fund distributions and gains from the sale of Fund Shares generally are subject to state and local income taxes.
- If the Fund qualifies to pass through the tax benefits from foreign taxes it pays on its investments, and elects to do so, then any foreign taxes it pays on these investments may be passed through to you. You will then be required to include your pro-rata share of these taxes in gross income, even though not actually received by you, and will be entitled either to deduct your share of these taxes in computing your taxable income, or to claim a foreign tax credit for these taxes against your U.S. federal income tax.
- Foreign investors should be aware that U.S. withholding, special certification requirements to avoid U.S. backup withholding and claim any treaty benefits, and estate taxes may apply to an investment in the Fund.
- Under the Foreign Account Tax Compliance Act (FATCA), a 30% withholding tax is imposed on income dividends made by the Fund to certain foreign entities, referred to as foreign financial institutions or non-financial foreign entities, that fail to comply (or be deemed compliant) with extensive reporting and withholding requirements designed to inform the U.S. Department of the Treasury of U.S.-owned foreign investment accounts. After December 31, 2018, FATCA withholding also would have applied to certain capital gain distributions, return of capital distributions and the proceeds arising from the sale of Shares; however, based on proposed regulations issued by the IRS, which can be relied upon currently, such withholding is no longer required unless final regulations provide otherwise (which is not expected). The Fund may disclose the information that it receives from its shareholders to the IRS, non-U.S. taxing authorities or other parties as necessary to comply with FATCA or similar laws. Withholding also may be required if a foreign entity that is a shareholder of the Fund fails to provide the Fund with appropriate certifications or other documentation concerning its status under FATCA.
- If the Fund invests in an underlying fund taxed as a RIC, please see any relevant section below for more information regarding the Fund's investment in such underlying fund.

Taxes on Purchase and Redemption of Creation Units

To the extent that the Fund permits in-kind transactions, an AP that exchanges equity securities for a Creation Unit generally will recognize a capital gain or loss equal to the difference between the market value of the Creation Units at the time of exchange (plus any cash received by the AP as

part of the issue) and the sum of the AP's aggregate basis in the securities surrendered plus any cash component paid. Similarly, an AP that redeems a Creation Unit in exchange for securities generally will recognize a capital gain or loss equal to the difference between the AP's basis in the Creation Units (plus any cash paid by the AP as part of the redemption) and the aggregate market value of the securities received (plus any cash received by the AP as part of the redemption). The IRS, however, may assert that a loss realized upon an exchange of securities for a Creation Unit, or of a Creation Unit for securities, cannot be deducted currently under the rules governing "wash sales" or on the ground that there has been no significant change in the AP's economic position. An AP exchanging securities should consult their own tax advisors with respect to whether wash sale rules apply and when a loss otherwise might not be deductible.

Any capital gain or loss realized on a redemption of a Creation Unit generally is treated as long-term capital gain or loss if the Shares have been held for more than one year and as short-term capital gain or loss if the Shares have been held for one year or less, assuming that such Creation Units are held as a capital asset. If you purchase or redeem one or more Creation Units, you will be sent a confirmation statement showing how many Shares you purchased or sold and at what price.

The foregoing discussion summarizes some of the more important possible consequences under current federal, state and local tax law of an investment in the Fund. It is not a substitute for personal tax advice. You also may be subject to state, local and/or foreign tax on the Fund's distributions and sales and/or redemptions of Shares. Consult your personal tax advisor(s) about the potential tax consequences of an investment in the Shares under all applicable tax laws.

Distributor

Invesco Distributors, Inc. (the "Distributor") serves as the distributor of Creation Units for the Fund on an agency basis. The Distributor does not maintain a secondary market in Shares. The Distributor is an affiliate of the Adviser.

Net Asset Value

The Bank of New York Mellon ("BNYM") calculates the Fund's NAV at the close of regular trading (normally 4:00 p.m., Eastern time) every day the NYSE is open. The NAV for the Fund will be calculated and disseminated daily on each day that the NYSE is open. NAV is calculated by deducting all of the Fund's liabilities from the total value of its assets and dividing the result by the number of Shares outstanding, rounding to the nearest cent. Generally, the portfolio securities are recorded in the NAV no later than the trade date plus one day. All valuations are subject to review by the Trust's Board or its delegate.

In determining NAV, expenses are accrued and applied daily and securities and other assets for which market quotations are readily available are valued at market value. Securities listed or traded on an exchange (except convertible securities) generally are valued at the last sales price or official closing price that day as of the close of the exchange where the security is primarily traded. Investment companies are valued using such company's NAV per share, unless the shares are exchange-traded, in which case they will be valued at the last sale or official closing price on the exchanges on which they primarily trade. Deposits, other obligations of U.S. and non-U.S. banks and financial institutions, and cash equivalents are valued at their daily account value. Debt obligations (including convertible securities) and securities not listed on an exchange normally are valued on the basis of prices provided by independent pricing services. Pricing services generally value debt securities assuming orderly transactions of institutional round lot size, but the Fund may hold or transact in the same

securities in smaller, odd lot sizes. Odd lots often trade at lower prices than institutional round lots. Futures contracts are valued at the final settlement price set by an exchange on which they are principally traded. Listed options are valued at the mean between the last bid and asked prices from the exchange on which they principally trade. Options not listed on an exchange are valued by an independent source at the mean between the last bid and asked prices. Swaps generally are valued using pricing provided from independent pricing services. For purposes of determining NAV per Share, futures and option contracts and swaps generally are valued 15 minutes after the close of the customary trading session of the NYSE.

Certain securities may not be listed on an exchange; typically, those securities are bought and sold by institutional investors in individually negotiated private transactions. Such securities, as well as listed securities whose market price is not readily available, will be valued using pricing provided from independent pricing services or by another method that the Adviser, in its judgment, believes will better reflect the security's fair value in accordance with the Trust's valuation policies and procedures approved by the Board.

Even when market quotations are available for portfolio securities, they may be stale or unreliable because the security is not traded frequently, trading on the security ceased before the close of the trading market or issuer-specific events occurred after the security ceased trading or because of the passage of time between the close of the market on which the security trades and the close of the NYSE and when the Fund calculates its NAV. Events that may cause the last market quotation to be unreliable include a merger or insolvency, events which affect a geographical area or an industry segment, such as political events or natural disasters, or market events, such as a significant movement in the U.S. market. Where market quotations are not readily available, including where the Adviser determines that the closing price of the security is unreliable, the Adviser will value the security at fair value in good faith using procedures approved by the Board. Fair value pricing involves subjective judgments and it is possible that a fair value determination for a security is materially different than the value that could be realized upon the sale of the security. In addition, fair value pricing could result in a difference between the prices used to calculate the Fund's NAV and the prices used by the Fund's Underlying Index. This may adversely affect the Fund's ability to track its Underlying Index. With respect to securities that are primarily listed on foreign exchanges, the value of the Fund's portfolio securities may change on days when you will not be able to purchase or sell your Shares.

Fund Service Providers

BNYM, 240 Greenwich Street, New York, New York 10286, is the administrator, custodian and fund accounting and transfer agent for the Fund.

Stradley Ronon Stevens & Young LLP, 191 North Wacker Drive, Suite 1601, Chicago, Illinois 60606, and 1250 Connecticut Avenue, N.W., Suite 500, Washington, D.C. 20036, serves as legal counsel to the Trust.

PricewaterhouseCoopers LLP ("PwC"), One North Wacker Drive, Chicago, Illinois 60606, serves as the Fund's independent registered public accounting firm. PwC is responsible for auditing the annual financial statements of the Fund and assists in the preparation and/or review of the Fund's federal and state income tax returns.

Financial Highlights

The financial highlights table below is intended to help you understand the Fund's financial performance for the past five fiscal years. Certain information reflects financial results for a single Share. The total returns in the table represent the rate that an investor would have earned (or lost) on an investment in the Fund (assuming reinvestment of all dividends and

distributions). This information has been derived from the Fund's financial statements, which have been audited by PwC, whose report, along with the Fund's financial statements, is included in the Fund's Annual Report for the fiscal year ended April 30, 2020, and which is available upon request.

	Years Ended April 30,				
	2020	2019	2018	2017 ^(a)	2016 ^(a)
Per Share Operating Performance:					
Net asset value at beginning of year	\$ 28.30	\$ 24.64	\$ 20.85	\$ 20.55	\$ 28.80
Net investment income ^(b)	0.49	0.39	0.31	0.30	0.55
Net realized and unrealized gain (loss) on investments	3.73	3.66	3.78	0.40	(8.30)
Total from investment operations	4.22	4.05	4.09	0.70	(7.75)
Distributions to shareholders from:					
Net investment income	(0.61)	(0.39)	(0.30)	(0.40)	(0.50)
Net asset value at end of year	\$ 31.91	\$ 28.30	\$ 24.64	\$ 20.85	\$ 20.55
Market price at end of year ^(c)	\$ 31.93	\$ 28.31	\$ 24.66	\$ 20.85	\$ 20.55
Net Asset Value Total Return ^(d)	15.13%	16.76%	19.78%	3.60%	(27.19)%
Market Price Total Return ^(d)	15.16%	16.70%	19.87%	3.60%	(27.19)%
Ratios/Supplemental Data:					
Net assets at end of year (000's omitted)	\$247,876	\$144,857	\$116,263	\$103,177	\$101,255
Ratio to average net assets of:					
Expenses, after Waivers	0.70%	0.70%	0.70%	0.70%	0.70%
Expenses, prior to Waivers	0.70%	0.71%	0.77%	0.76%	0.76%
Net investment income	1.57%	1.56%	1.30%	1.59%	2.37%
Portfolio turnover rate ^(e)	40%	40%	43%	59%	60%

(a) Per share amounts have been adjusted to reflect a one-for-five reverse stock split effective after the close of business on October 20, 2017.

(b) Based on average shares outstanding.

(c) The mean between the last bid and ask prices.

(d) Net asset value total return is calculated assuming an initial investment made at the net asset value at the beginning of the period, reinvestment of all dividends and distributions at net asset value during the period, and redemption at net asset value on the last day of the period. Net asset value total return includes adjustments in accordance with accounting principles generally accepted in the United States of America and as such, the net asset value for financial reporting purposes and the returns based upon those net asset values may differ from the net asset value and returns for shareholder transactions. Market price total return is calculated assuming an initial investment made at the market price at the beginning of the period, reinvestment of all dividends and distributions at market price during the period, and sale at the market price on the last day of the period. Total investment returns calculated for a period of less than one year are not annualized.

(e) Portfolio turnover rate is not annualized for periods less than one year, if applicable, and does not include securities received or delivered from processing creations or redemptions.

Index Provider

No entity that creates, compiles, sponsors or maintains the Underlying Index is or will be an affiliated person, as defined in Section 2(a)(3) of the 1940 Act, or an affiliated person of an affiliated person, of the Trust, the Adviser, the Distributor or a promoter of the Fund.

Neither the Adviser nor any affiliate of the Adviser has any rights to influence the selection of the securities in the Underlying Index.

The Underlying Index is calculated and maintained by or on behalf of the Index Provider or its affiliate, agent or partner. The Index Provider is not affiliated with the Trust, the Adviser or the Distributor. The Adviser has entered into a license agreement with the Index Provider. The Fund is entitled to use its Underlying Index pursuant to a sub-licensing agreement with the Adviser.

WilderHill, owned by WilderShares LLC (“WilderShares”), is the index provider for the Underlying Index. There is no relationship between WilderShares and the Distributor, the Adviser or the Trust other than a license by WilderShares to the Adviser of certain WilderHill trademarks and trade names, and the WilderHill Clean Energy Index, for use by the Distributor, the Adviser and the Trust. Such trademarks, tradenames, and the WilderHill Clean Energy Index have been created and developed by WilderShares without regard to the Distributor, the Adviser, the Trust, their businesses, the Fund and/or any prospective investor.

Disclaimers

WilderShares. The WilderHill Clean Energy Index is a trademark of WilderShares. The Underlying Index has been licensed for use for certain purposes by the Adviser.

The Invesco WilderHill Clean Energy ETF is not sponsored, endorsed, sold or promoted by WilderShares, and the Index Provider does not make any representation regarding the advisability of investing in Shares of the Fund.

THE INDEX PROVIDER MAKES NO WARRANTY, EXPRESS OR IMPLIED, AS TO RESULTS TO BE OBTAINED BY THE DISTRIBUTOR, THE ADVISER, THE TRUST OR OWNERS OF SHARES, OR ANY OTHER PERSON OR ENTITY, FROM THE USE OF THE UNDERLYING INDEX OR ANY DATA INCLUDED THEREIN. THE INDEX PROVIDER MAKES NO EXPRESS OR IMPLIED WARRANTIES, AND EXPRESSLY DISCLAIMS ALL WARRANTIES OF MERCHANTABILITY OR FITNESS FOR A PARTICULAR PURPOSE OR USE WITH RESPECT TO THE UNDERLYING INDEX OR ANY DATA INCLUDED THEREIN, BY THE FUND, THE TRUST OR THE SHARES. WITHOUT LIMITING ANY OF THE FOREGOING, IN NO EVENT SHALL THE INDEX PROVIDER HAVE ANY LIABILITY FOR ANY SPECIAL, PUNITIVE, INDIRECT, OR CONSEQUENTIAL DAMAGES (INCLUDING LOST PROFITS) RESULTING FROM THE USE OF THE UNDERLYING INDEX OR ANY DATA INCLUDED THEREIN, BY THE FUND, THE TRUST OR THE SHARES, EVEN IF NOTIFIED OF THE POSSIBILITY OF SUCH DAMAGES.

The Adviser does not guarantee the accuracy and/or the completeness of the Underlying Index or any data included therein, and the Adviser shall have no liability for any errors, omissions, restatements, re-calculations or interruptions therein. The Adviser makes no warranty, express or implied, as to results to be obtained by the Fund, owners of the Shares of the Fund or any other person or entity from the use of the Underlying Index or any data included therein. The Adviser makes no express or implied warranties and expressly disclaims all warranties of merchantability or fitness for a particular purpose or use with respect to the Underlying Index or any data included therein. Without limiting any of the foregoing, in no event shall the Adviser have any liability for any special, punitive, direct, indirect or consequential damages (including lost profits) arising out of matters relating to the use of the Underlying Index, even if notified of the possibility of such damages.

Premium/Discount Information

Information showing the number of days the market price of the Fund's Shares was greater (at a premium) and less (at a discount) than the Fund's NAV for the most recently completed calendar year, and the most recently completed calendar quarters since that year is available at www.invesco.com/ETFs.

Other Information

Section 12(d)(1) of the 1940 Act restricts investments by investment companies (and companies relying on Sections 3(c)(1) or 3(c)(7) of the 1940 Act) in the securities of other investment companies. However, registered investment companies are permitted to invest in the Fund beyond the limits set forth in Section 12(d)(1) subject to certain terms and conditions set forth in an SEC exemptive order issued to the Trust, including that such investment companies enter into a participation agreement with the Trust on behalf of the Fund prior to exceeding the limits imposed by Section 12(d)(1). Additionally, the Fund is permitted, pursuant to another SEC exemptive order that the SEC has issued to the Trust, to invest in other registered investment companies beyond the limits set forth in Section 12(d)(1) subject to certain terms and conditions set forth in that order. If the Fund relies on this exemptive relief, however, other investment companies may not invest in the Fund beyond the statutory provisions of Section 12(d)(1).

Continuous Offering

The method by which Creation Unit Aggregations of Shares are created and traded may raise certain issues under applicable securities laws. Because new Creation Unit Aggregations of Shares are issued and sold by the Fund on an ongoing basis, a “distribution,” as such term is used in the Securities Act, may occur at any point. Broker-dealers and other persons are cautioned that some activities on their part may, depending on the circumstances, result in their being deemed participants in a distribution in a manner which could render them statutory underwriters and subject them to the prospectus delivery requirement and liability provisions of the Securities Act.

For example, a broker-dealer firm or its client may be deemed a statutory underwriter if it takes Creation Unit Aggregations after placing an order with the Distributor, breaks them down into constituent Shares and sells such Shares directly to customers, or if it chooses to couple the creation of a supply of new Shares with an active selling effort involving solicitation of secondary market demand for Shares. A determination of whether one is an underwriter for purposes of the Securities Act must take into account all the facts and circumstances pertaining to the activities of the broker-dealer or its client in the particular case, and the examples mentioned above should not be considered a complete description of all the activities that could lead to a characterization as an underwriter.

Broker-dealer firms also should note that dealers who are not “underwriters” but are effecting transactions in Shares, whether or not participating in the distribution of Shares, generally are required to deliver a prospectus. This is because the prospectus delivery exemption in Section 4(a)(3)(C) of the Securities Act is not available in respect of such transactions as a result of Section 24(d) of the 1940 Act. As a result, broker-dealer firms should note that dealers who are not “underwriters” but are participating in a distribution (as contrasted with engaging in ordinary secondary market transactions), and thus dealing with the Shares that are part of an over-allotment within the meaning of Section 4(a)(3)(C) of the Securities Act, will be unable to take advantage of the prospectus delivery exemption provided by Section 4(a)(3) of the Securities Act. For delivery of prospectuses to exchange members, the prospectus delivery mechanism of Rule 153 under the Securities Act only is available with respect to transactions on a national exchange.

Delivery of Shareholder Documents—Householding

Householding is an option available to certain investors of the Fund. Householding is a method of delivery, based on the preference of the individual investor, in which a single copy of certain shareholder documents can be delivered to investors who share the same address, even if their accounts are registered under different names. Householding for the Fund is available through certain broker-dealers. If you are interested in enrolling in householding and receiving a single copy of the Prospectus and other shareholder documents, please contact your broker-dealer. If you currently are enrolled in householding and wish to change your householding status, please contact your broker-dealer.

For More Information

For more detailed information on the Trust, the Fund and the Shares, you may request a copy of the Fund's SAI. The SAI provides detailed information about the Fund and is incorporated by reference into this Prospectus. This means that the SAI legally is a part of this Prospectus. Additional information about the Fund's investments also is available in the Fund's Annual and Semi-Annual Reports to Shareholders. In the Fund's current Annual Report, you will find a discussion of the market conditions and investment strategies that significantly affected the Fund's performance during the last fiscal year. If you have questions about the Fund or Shares or you wish to obtain the SAI, Annual Report and/or Semi-Annual Report, free of charge, or to make shareholder inquiries, please:

Call: Invesco Distributors, Inc. at 1-800-983-0903
Monday through Friday
8:00 a.m. to 5:00 p.m. Central Time

Write: Invesco Exchange-Traded Fund Trust
c/o Invesco Distributors, Inc.
11 Greenway Plaza, Suite 1000
Houston, Texas 77046-1173

Visit: www.invesco.com/ETFs

Reports and other information about the Fund are available on the EDGAR Database on the SEC's internet site at www.sec.gov, and copies of this information may be obtained, after paying a duplicating fee, by electronic request at the following e-mail address: publicinfo@sec.gov.

No person is authorized to give any information or to make any representations about the Fund and its Shares not contained in this Prospectus, and you should not rely on any other information. Read and keep this Prospectus for future reference.

Dealers effecting transactions in the Shares, whether or not participating in this distribution, generally are required to deliver a Prospectus. This is in addition to any obligation of dealers to deliver a Prospectus when acting as underwriters.

The Trust's registration number under the 1940 Act is 811-21265.

